

# PRIMUS

> In-ground trampolines



Our top-range in-ground trampoline can be used by beginners, top athletes, and for rehabilitation therapy. Its top feature, the innovative AkroVent jumping mat, provides high-performance jumping and maximum safety. The unobtrusive flush-to ground design allows Primus to elegantly blend in with the surroundings.



Made of European top-quality materials



2.5 million jumps guarantee



62.7 % softer bounce absorption



Flush-to ground design



Round or rectangular design in various sizes



Optional corner, semi- or fully-enclosed safety net



No safety-pad slap sound



All-weather year-round use



Beginner to professional / rehabilitation

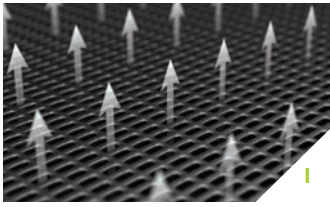


Wheel-chair access



Also available in rectangular shape

 **KROBAT**  
PASSION FOR JUMPING



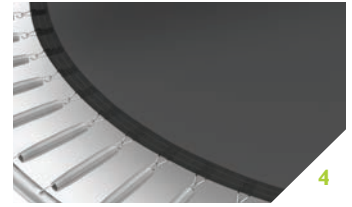
1 - AkroVent perforated jumping mat offers effective air ventilation, superior bounce performance & tear resistance



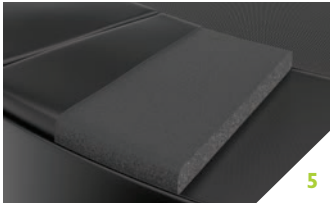
2 - UV-resistant heavy-duty pad



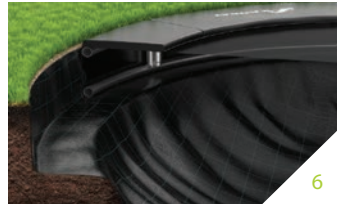
3 - Rust- and crack-resistant retaining wall keeps soil in place



4 - AkroSpring Pro spring system offers extremely durable elasticity, quiet operation and a more powerful bounce experience with low impact on the body.



5 - Fire-, water- and temperature-resistant high-density foam with prolonged life-span



6 - Weed protection layer included



7 - AkroClick system allows extremely easy assembly of the steel structure and insertion of safety net poles.

## Technical details

PRODUCT NAME	DIMENSIONS	NO. OF SPRINGS	SPRING LENGHT	ELEVATION ABOVE GROUND	FRAME HEIGHT	SAFETY NET HEIGHT*	TOP FRAME	BOTTOM FRAME	SAFETY PAD THICKNESS	MAX. WEIGHT OF JUMPER	COLOUR**
PRIMUS 8 (SET-PRIMUS-8)	Ø 8 ft / 250 cm	64	21.5 cm	FLUSH-IN	25 cm	180 cm	42/2 mm	42/1.5 mm	30 mm	80 kg	
PRIMUS 10 (SET-PRIMUS-10)	Ø 10 ft / 300 cm	80	21.5 cm	FLUSH-IN	25 cm	180 cm	42/2 mm	42/1.5 mm	30 mm	100 kg	
PRIMUS 12 (SET-PRIMUS-12)	Ø 12 ft / 360 cm	96	21.5 cm	FLUSH-IN	25 cm	180 cm	42/2 mm	42/1.5 mm	30 mm	125 kg	
PRIMUS 14 (SET-PRIMUS-14)	Ø 14 ft / 430 cm	104	21.5 cm	FLUSH-IN	25 cm	180 cm	42/2 mm	42/1.5 mm	30 mm	135 kg	
PRIMUS 10X6 (SET-PRIMUS-10X6)	10x6 ft / 180x300 cm	64	18.5 cm	FLUSH-IN	25 cm	180 cm	50/2 mm	50/2 mm	30 mm	100 kg	
PRIMUS 11X8 (SET-PRIMUS-11X8)	11x8 ft / 250x330 cm	80	21.5 cm	FLUSH-IN	25 cm	180 cm	50/2 mm	50/2 mm	30 mm	125 kg	
PRIMUS 14X10 (SET-PRIMUS-14X10)	14x10 ft / 300x430 cm	104	21.5 cm	FLUSH-IN	25 cm	180 cm	50/2 mm	50/2 mm	30 mm	135 kg	

\*Optional feature. \*\*Other colours available with min. 500 pc orders.

## Warranty

PRODUCT NAME	FRAME	FRAME PADDING	SPRINGS	JUMPING MAT	TEMPERATURE RANGE	CERTIFICATES
AKROBAT PRIMUS	15 years	3 years	5 years	5 years	-40 °C / +70 °C	CE / EN1176

## Safety net enclosure



Semi safety net



Full safety net

## Design options



Black safety pad / Grey jumping mat



Green safety pad / Black jumping mat



Grey safety pad / Black jumping mat

## Dealer information